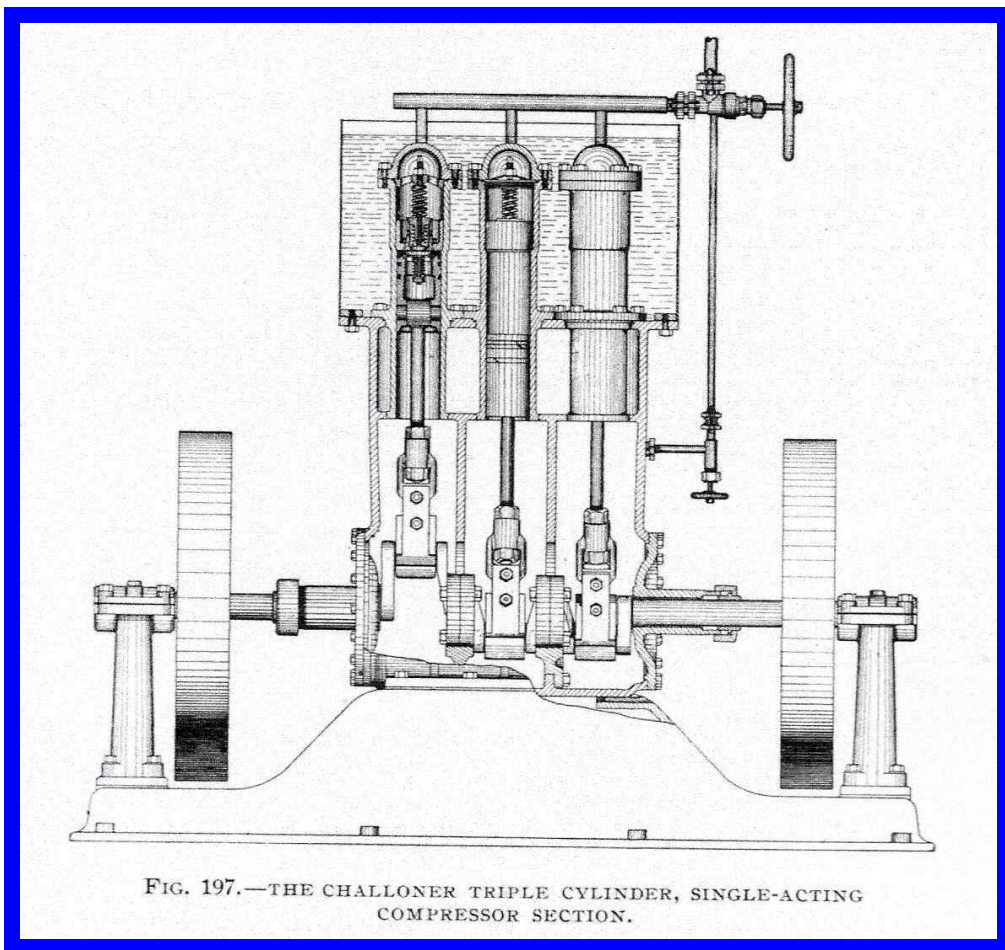


**American Refrigeration
Cold Storage & Ice-Making 1875-1915**

*Machinery for
Refrigeration-2*



**Illustrations from MACHINERY FOR REFRIGERATION
Norman Selfe, H S Rich & C0, Chicago 1900**

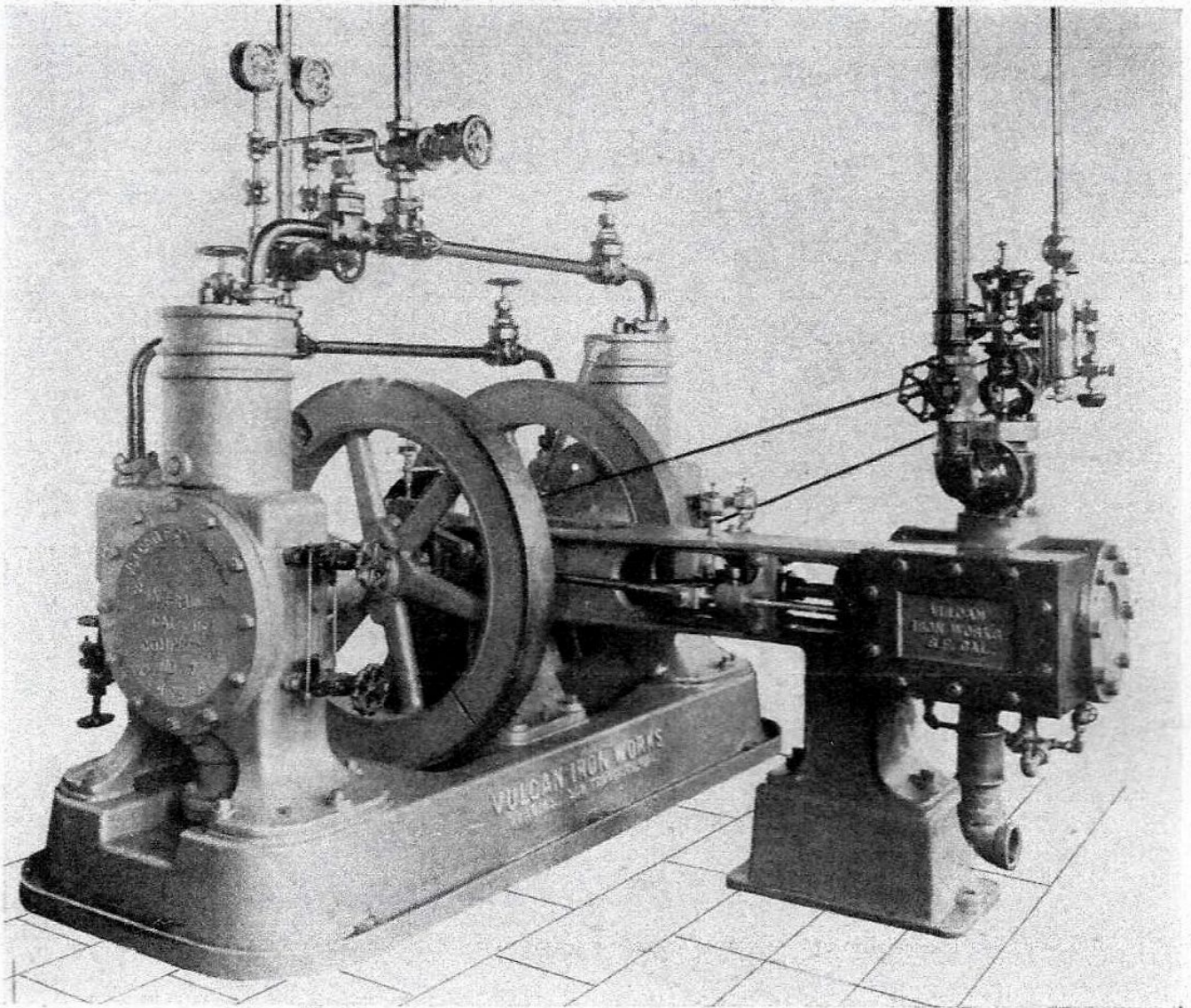


FIG. 203.—“VULCAN” COMPRESSOR, CLASS “B,” WITH STEAM ENGINE.

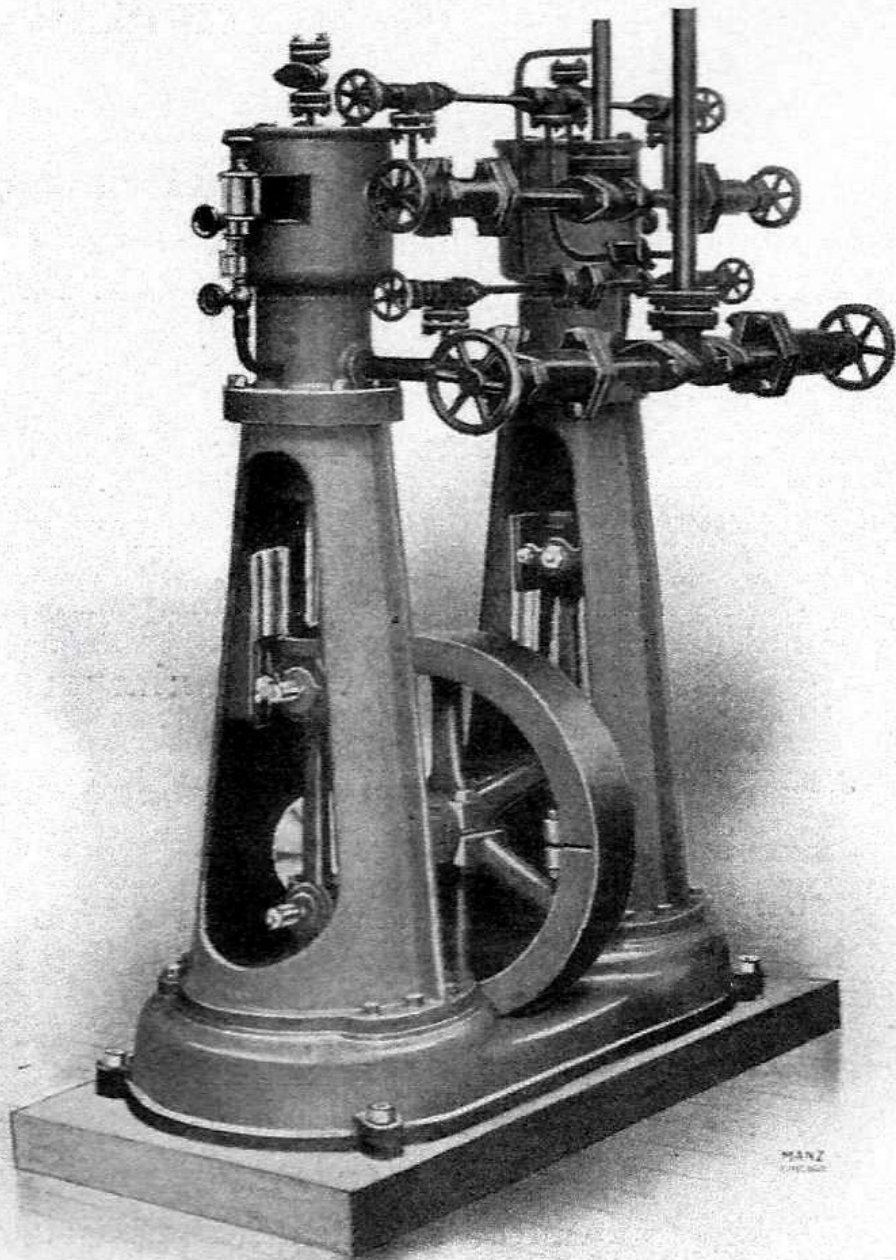


FIG. 204.—PERSPECTIVE VIEW STALLMAN COMPRESSOR, CREAMERY
PACKAGE MFG. CO., CHICAGO, U. S. A.

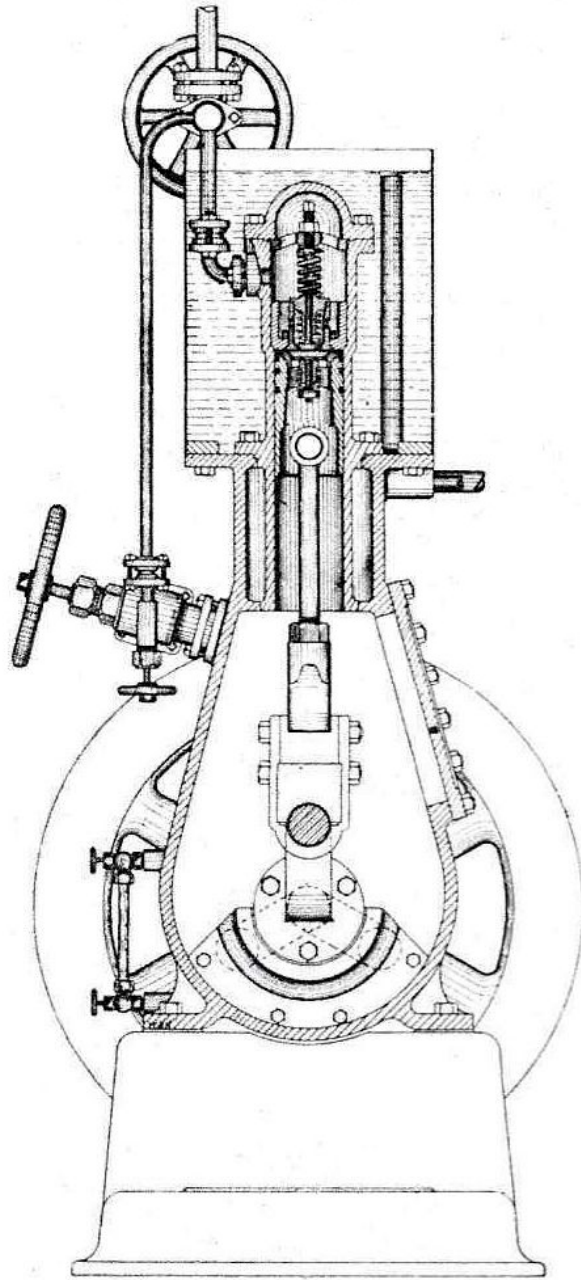


FIG. 198.—THE CHALLONER TRIPLE CYLINDER, SINGLE-ACTING COMPRESSOR, END VIEW.

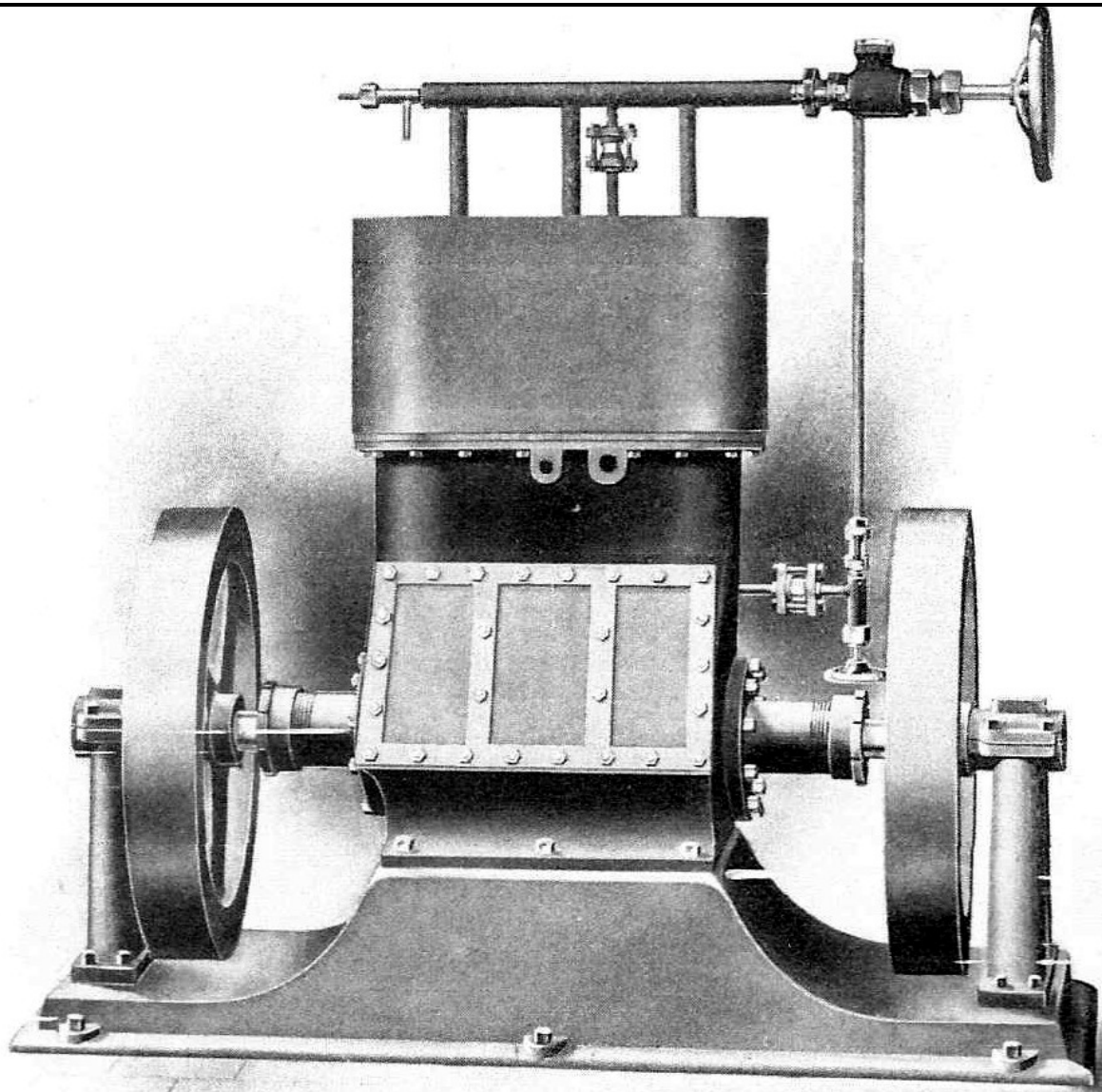


FIG. 196.—THE CHALLONER TRIPLE CYLINDER, SINGLE-ACTING
COMPRESSOR, GEO. CHALLONER'S SONS CO.,
OSHKOSH, WIS., U. S. A.

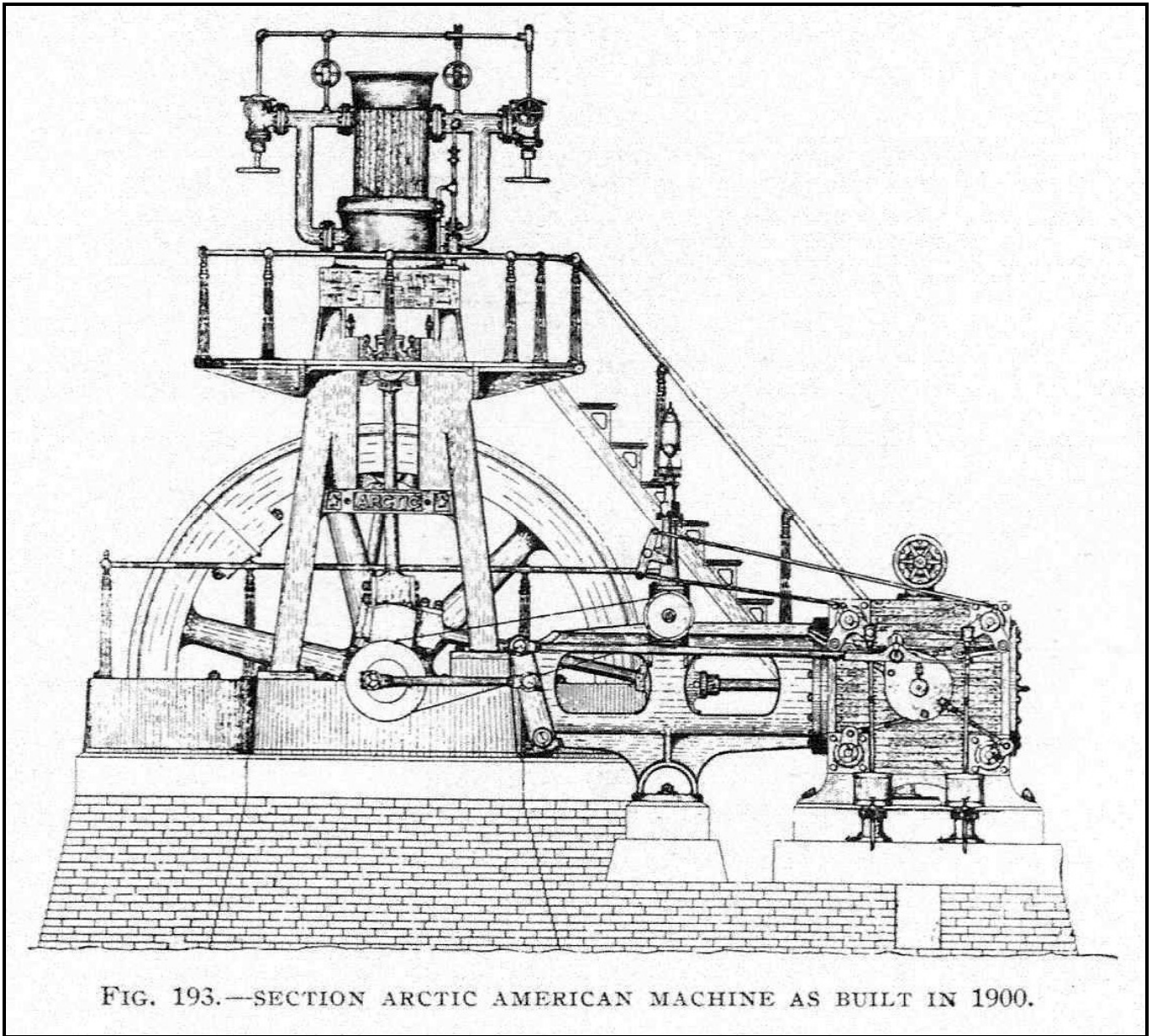


FIG. 193.—SECTION ARCTIC AMERICAN MACHINE AS BUILT IN 1900.

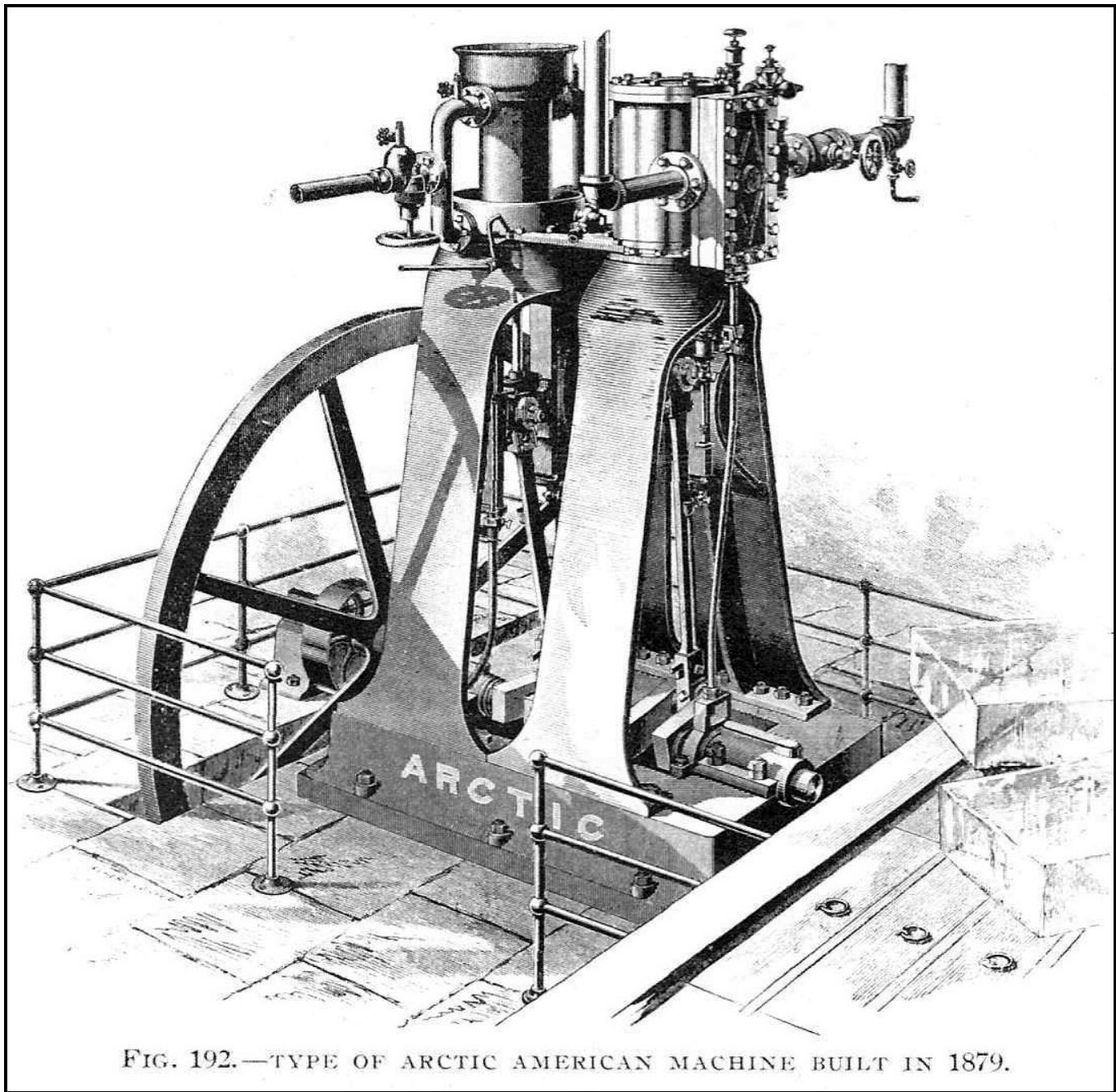


FIG. 192.—TYPE OF ARCTIC AMERICAN MACHINE BUILT IN 1879.

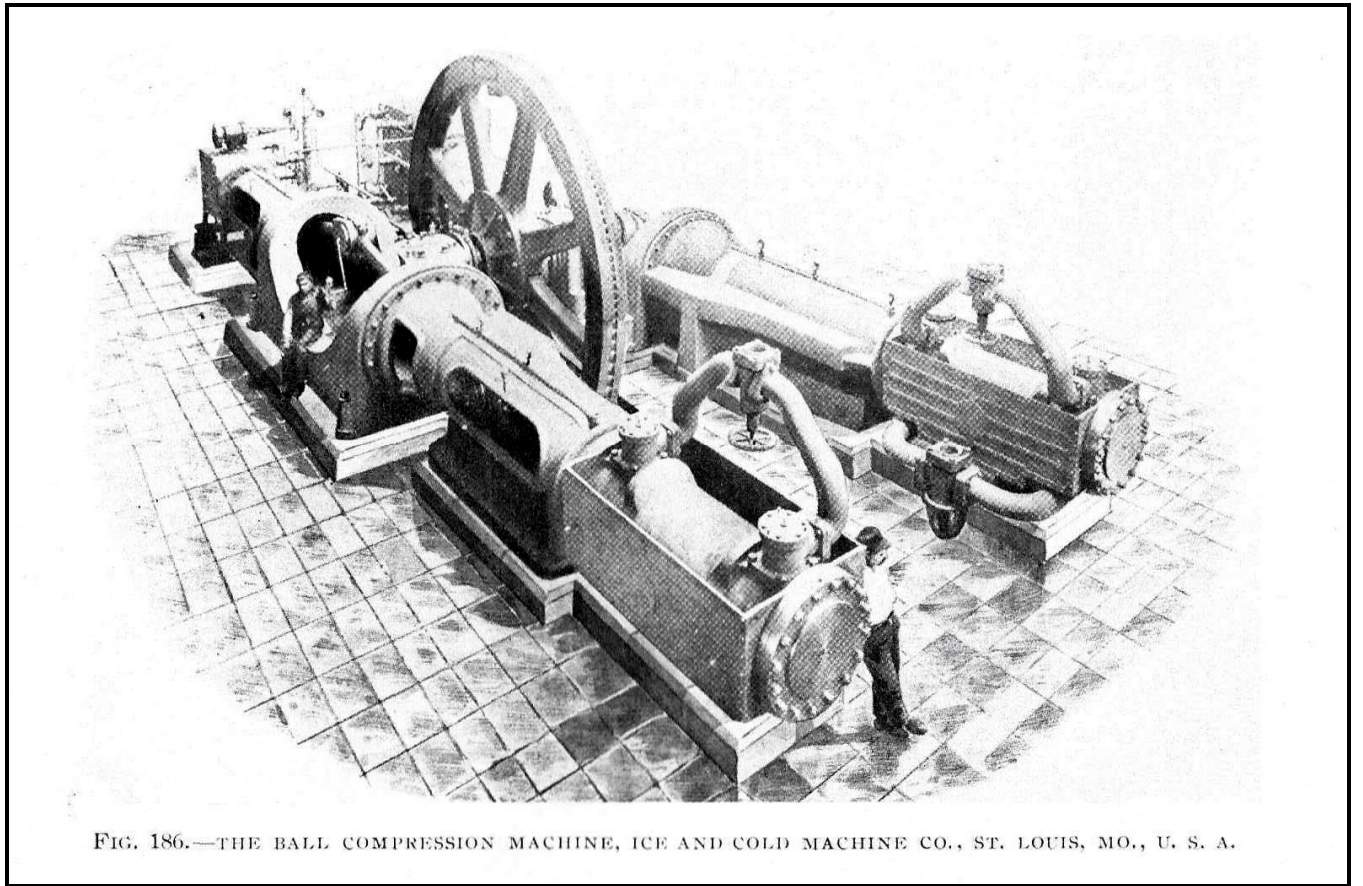


FIG. 186.—THE BALL COMPRESSION MACHINE, ICE AND COLD MACHINE CO., ST. LOUIS, MO., U. S. A.

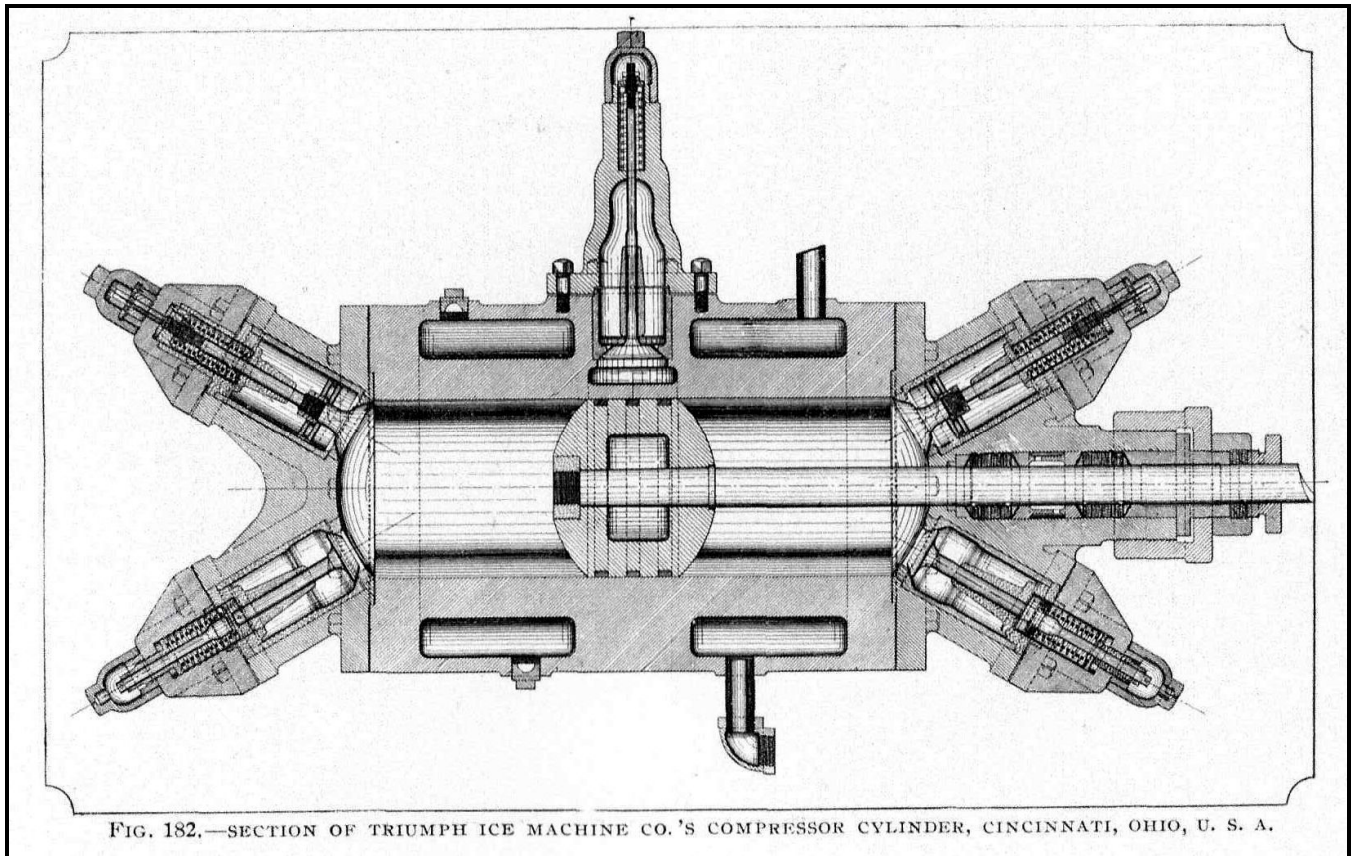
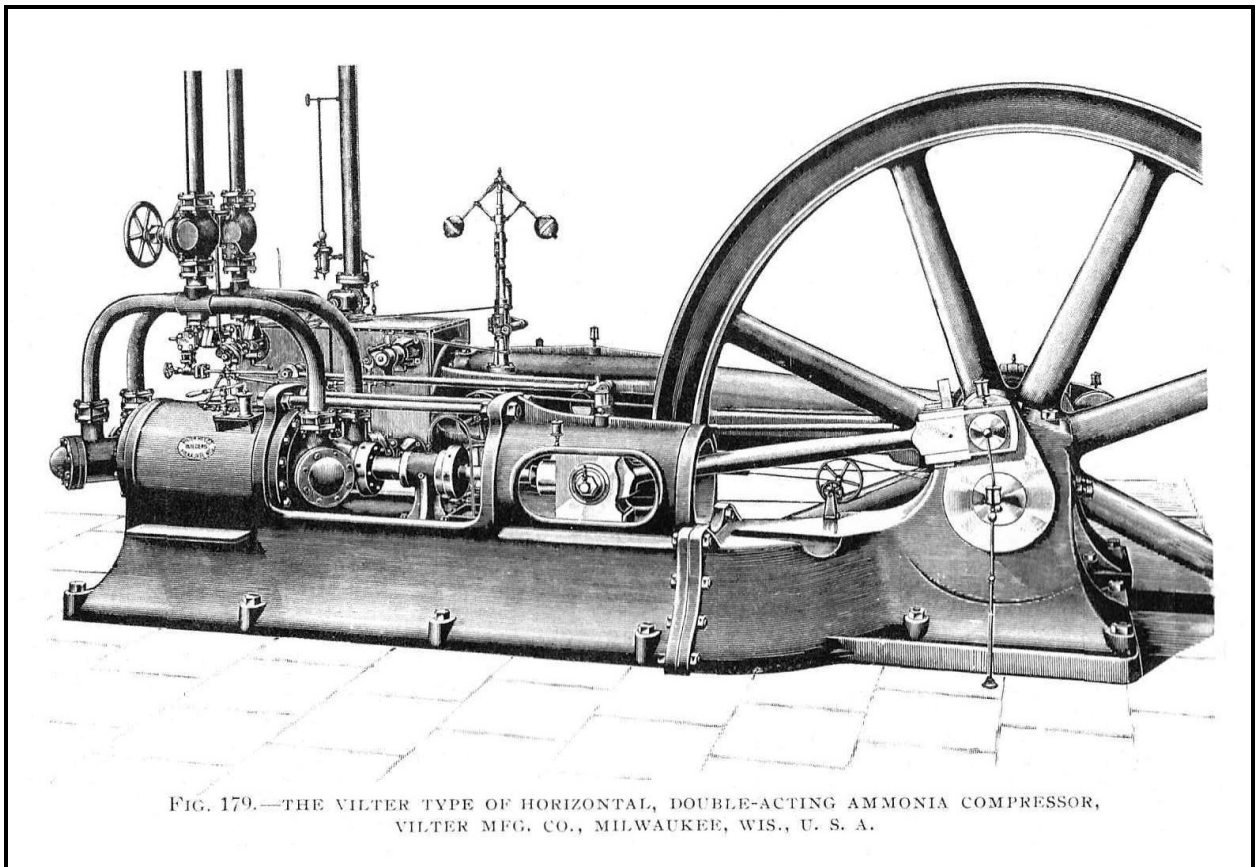
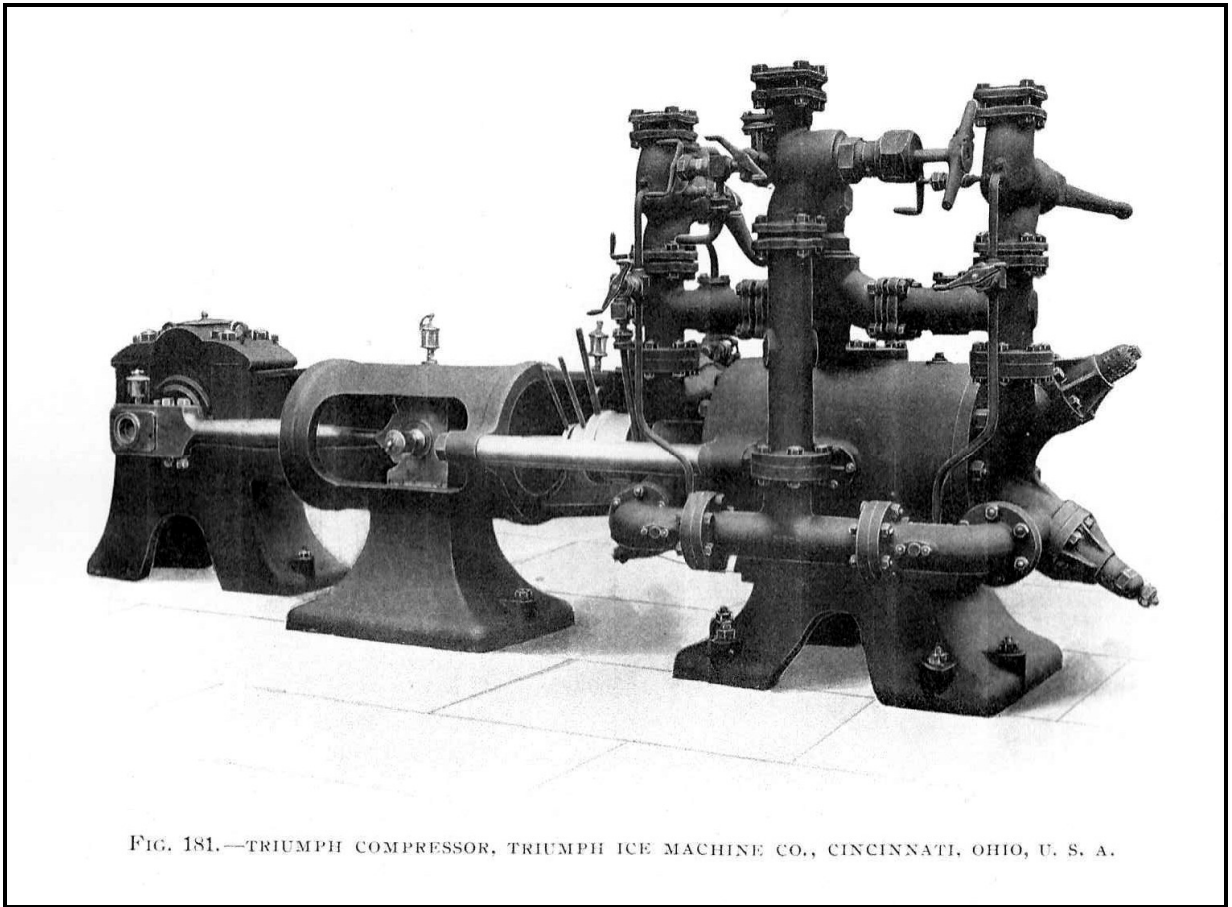


FIG. 182.—SECTION OF TRIUMPH ICE MACHINE CO.'S COMPRESSOR CYLINDER, CINCINNATI, OHIO, U. S. A.



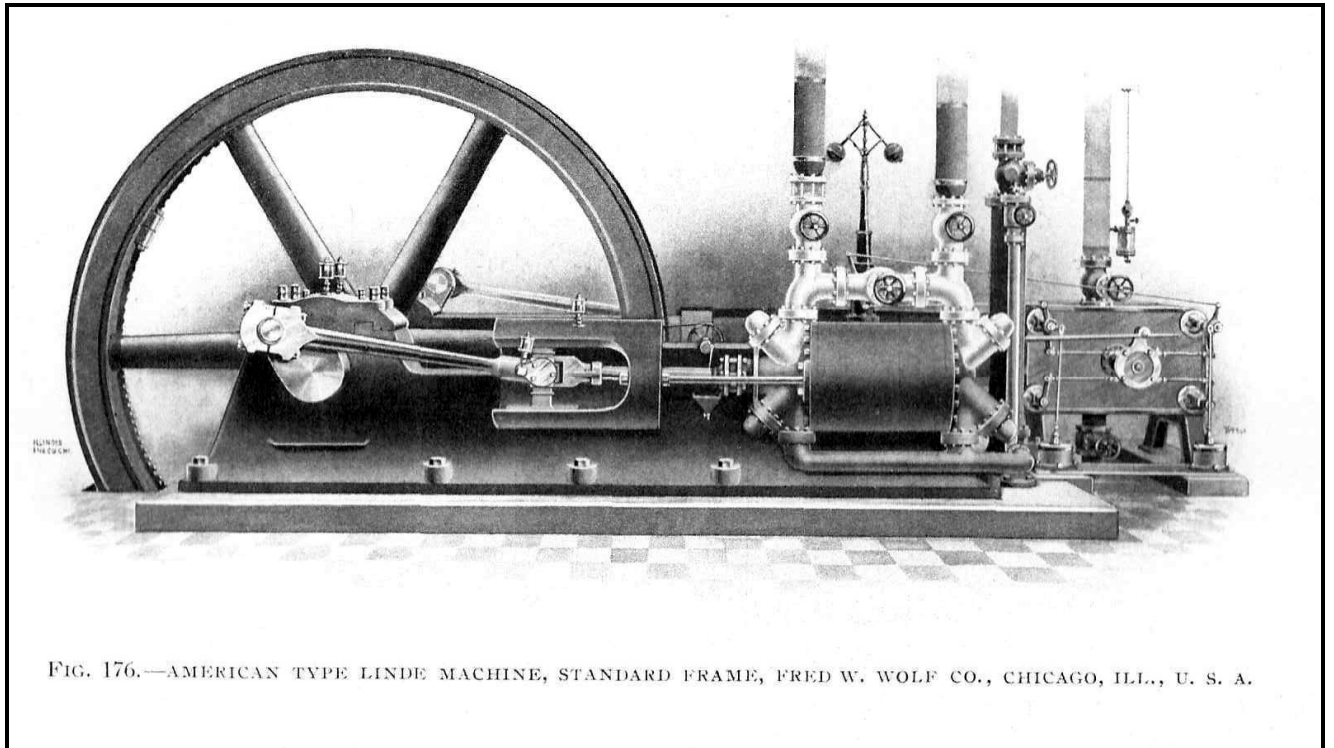


FIG. 176.—AMERICAN TYPE LINDE MACHINE, STANDARD FRAME, FRED W. WOLF CO., CHICAGO, ILL., U. S. A.

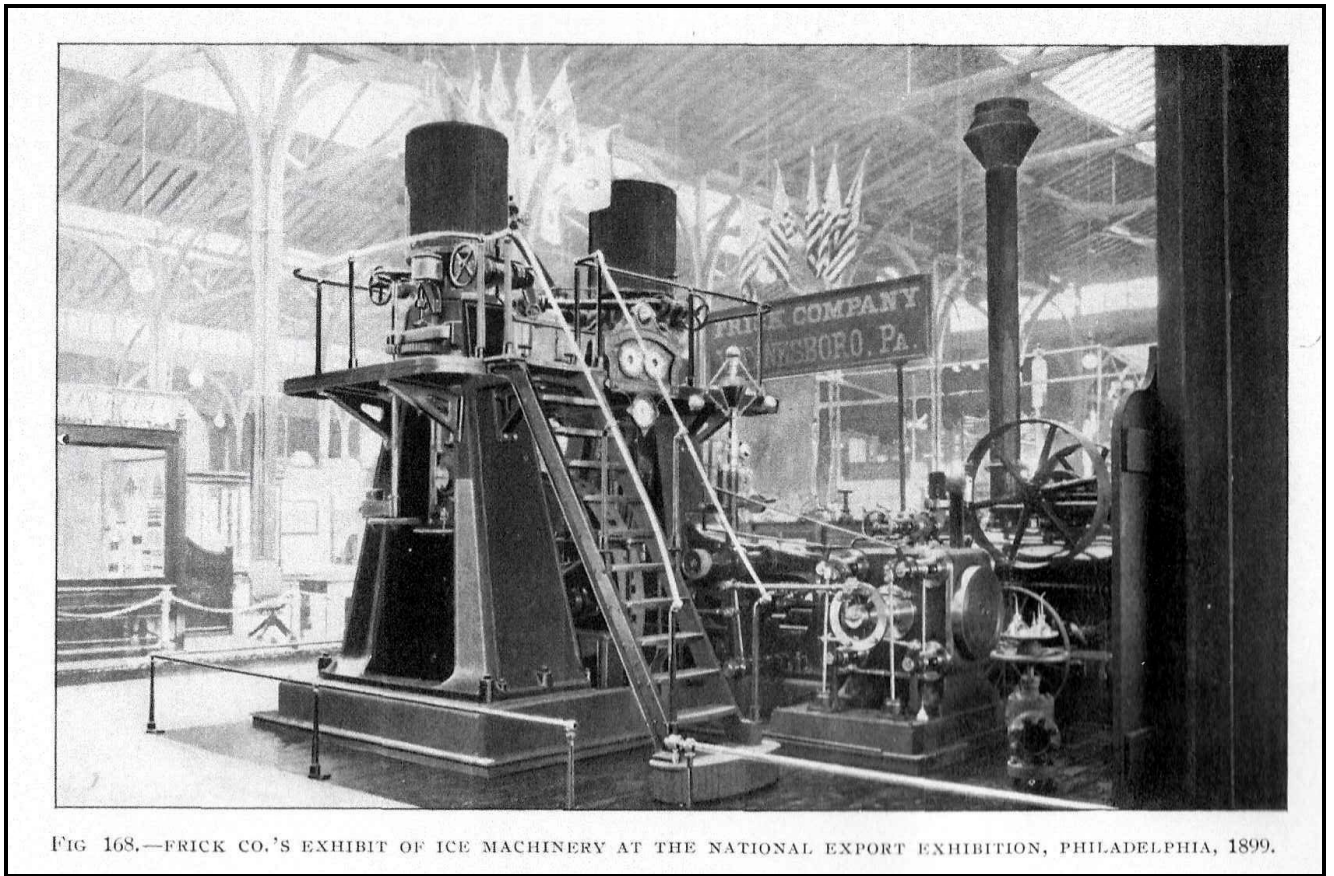
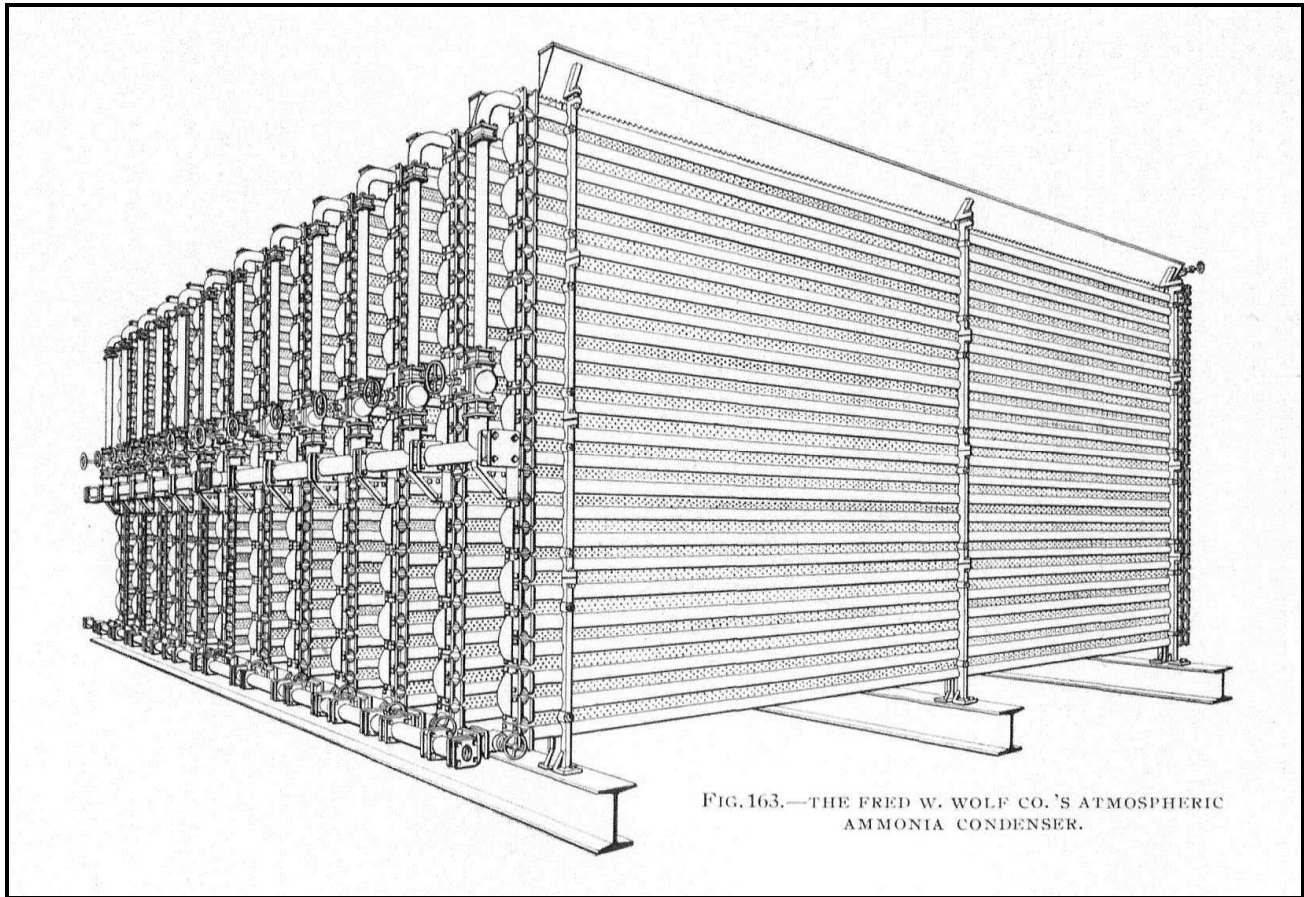
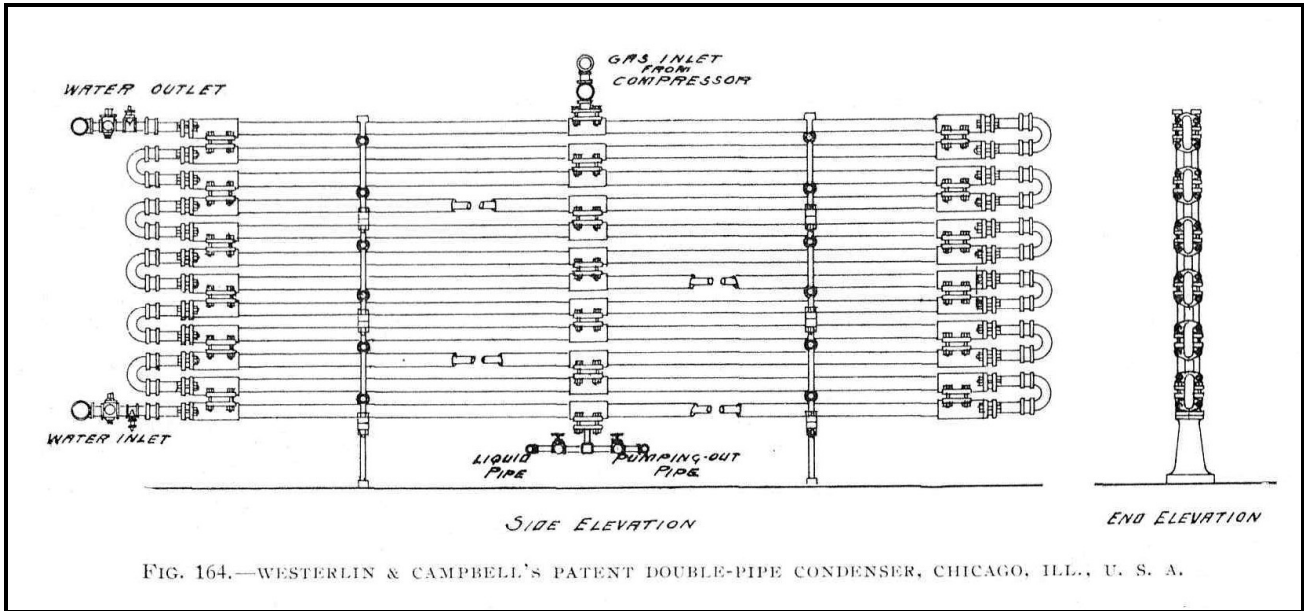
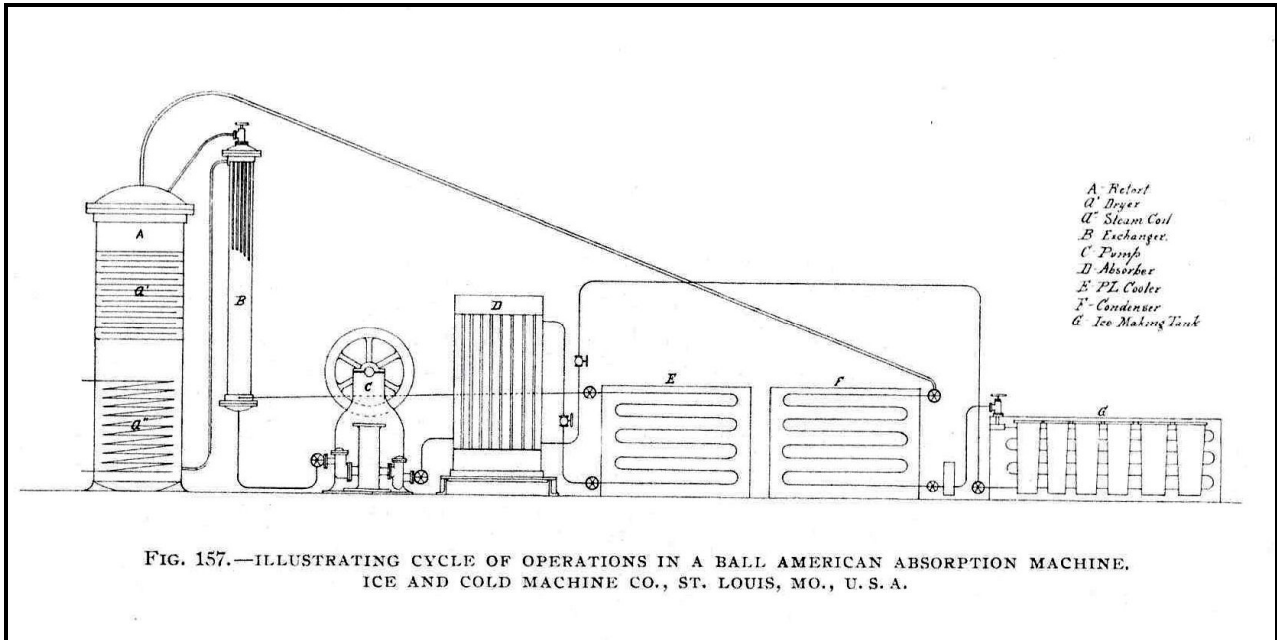
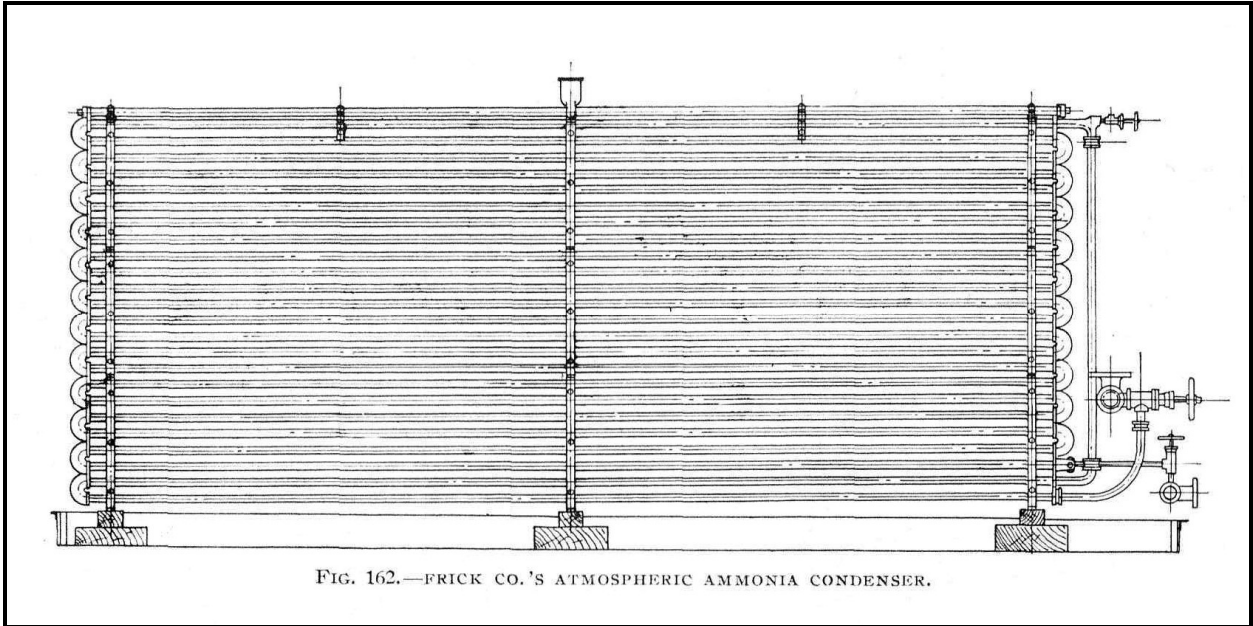


FIG 168.—FRICK CO.'S EXHIBIT OF ICE MACHINERY AT THE NATIONAL EXPORT EXHIBITION, PHILADELPHIA, 1899.





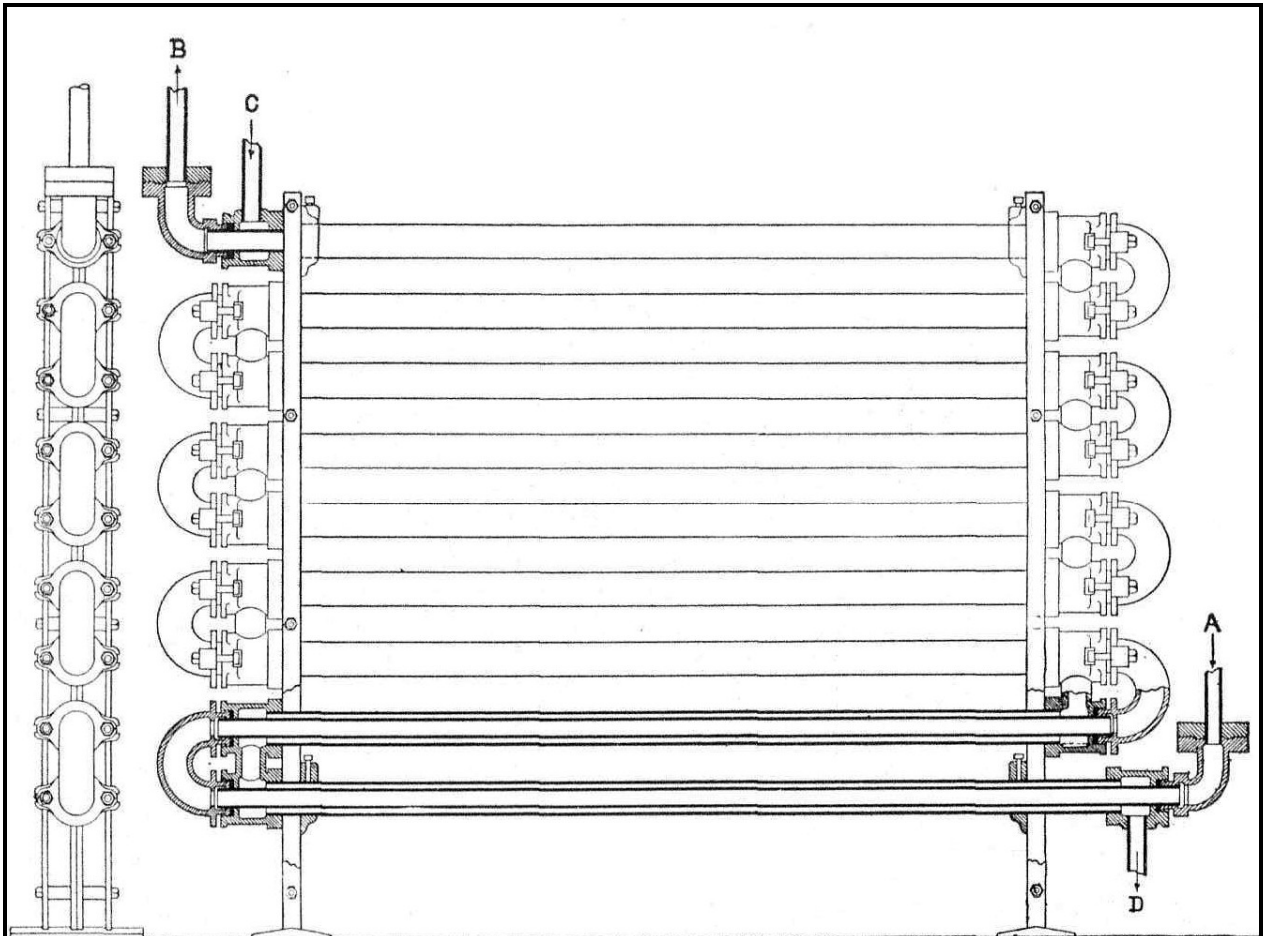


FIG. 156.—EQUALIZER OR EXCHANGER FOR VOGT ABSORPTION PLANT.

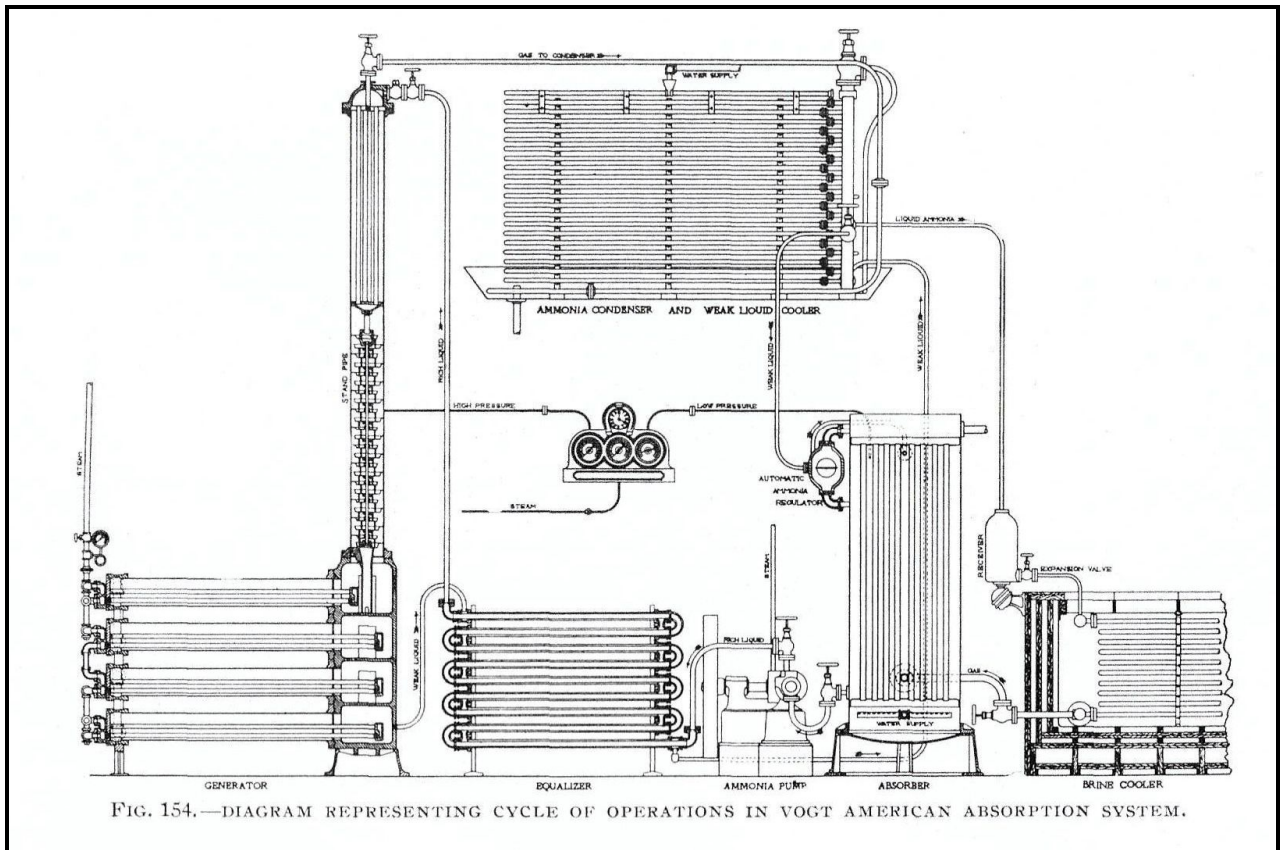


FIG. 154.—DIAGRAM REPRESENTING CYCLE OF OPERATIONS IN VOGT AMERICAN ABSORPTION SYSTEM.

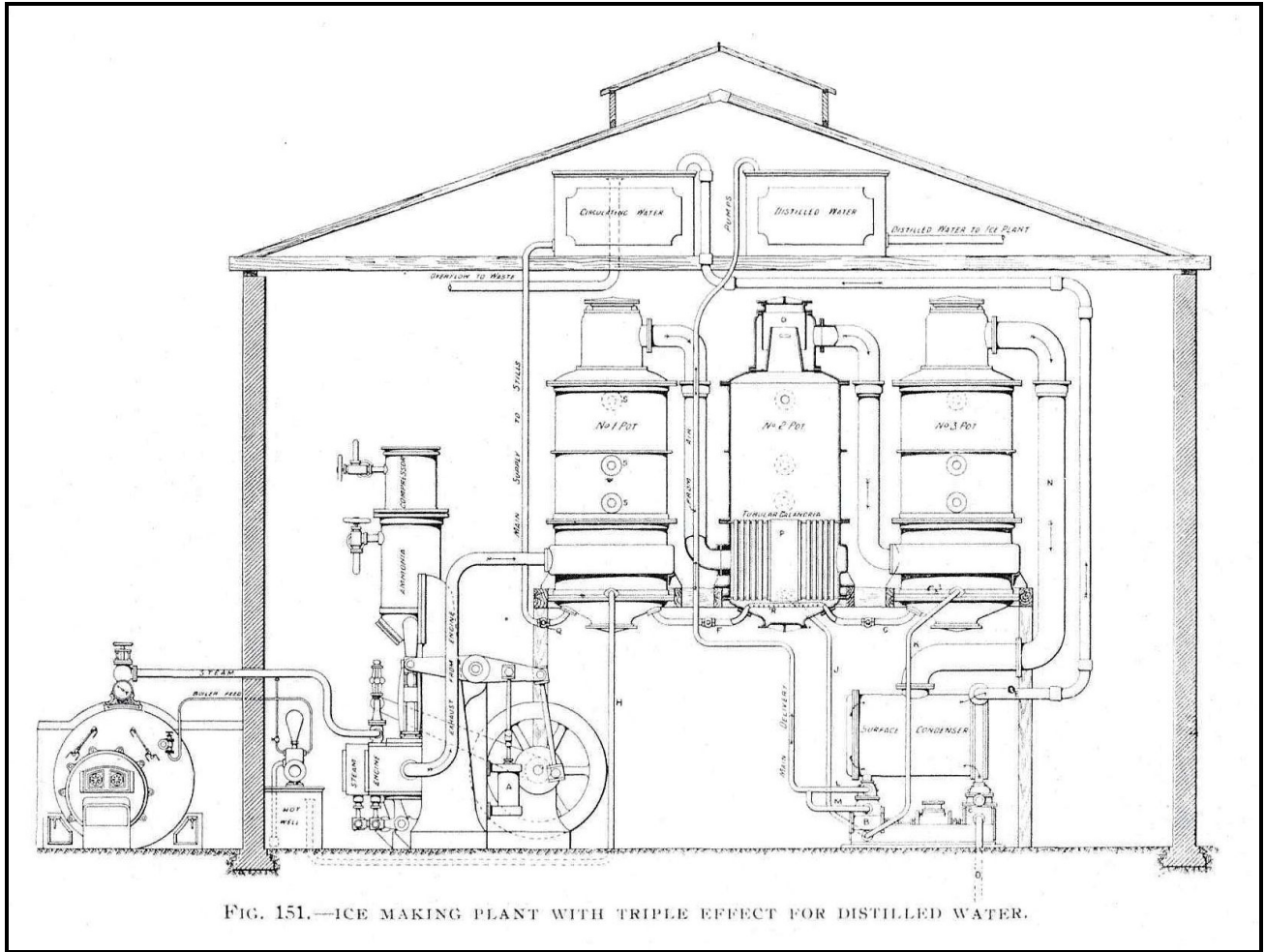


FIG. 151.—ICE MAKING PLANT WITH TRIPLE EFFECT FOR DISTILLED WATER.